

**Client:** Canadian Tire, Toronto, Ontario

**Topic:** Structural steel beams corroded due to water leakage

### **Situation**

Our client was:

- ∴ A retail location with significant leaking in the service department as a result of water leaking in from the overhead parking area.



### **Challenges**

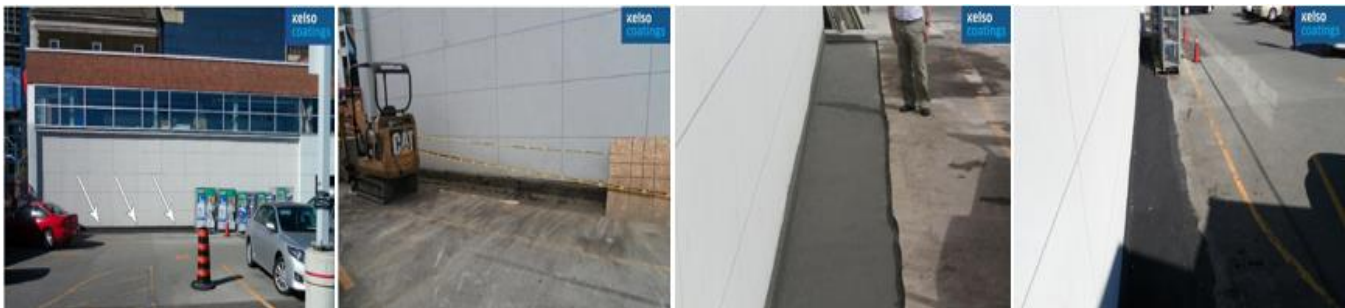
The challenges facing us were in:

- ∴ Busy retail location.
- ∴ Asphalt surface of parking area had to be removed, then replaced once the waterproof coating was in place.
- ∴ Existing membrane, which had joints, seams and overlaps, had to be removed then replaced with the seamless CN2000®.

### **Actions**

The actions we took to address these challenges were:

- ∴ The General Contractor removed the asphalt and the surface was prepared to be coated with CN2000®.
- ∴ CN2000® was applied from the outside, which works just as well as applying from the inside.
- ∴ After coating and the 24-hour curing period, the area was tested by flooding the surface.
- ∴ Once testing confirmed negative leaking results, the General Contractor re-applied the asphalt surface.
- ∴ Entire project was completed, and Canadian Tire back to work, within two days.



### **Results**

Our actions resulted in:

- ∴ Permanent solution to significant water leakage problem.
- ∴ Canadian Tire improved the image and look of its store while reducing its downtime and inconvenience to customers.

For additional information, or to discuss your requirements, please contact:

Kelso Industrial Group ♦ 575 Industrial Drive ♦ Milton, ON L9T 5E1 ♦ 877-462-7639  
info@kelsoindustrial.com ♦ www.kelsoindustrialgroup.com